

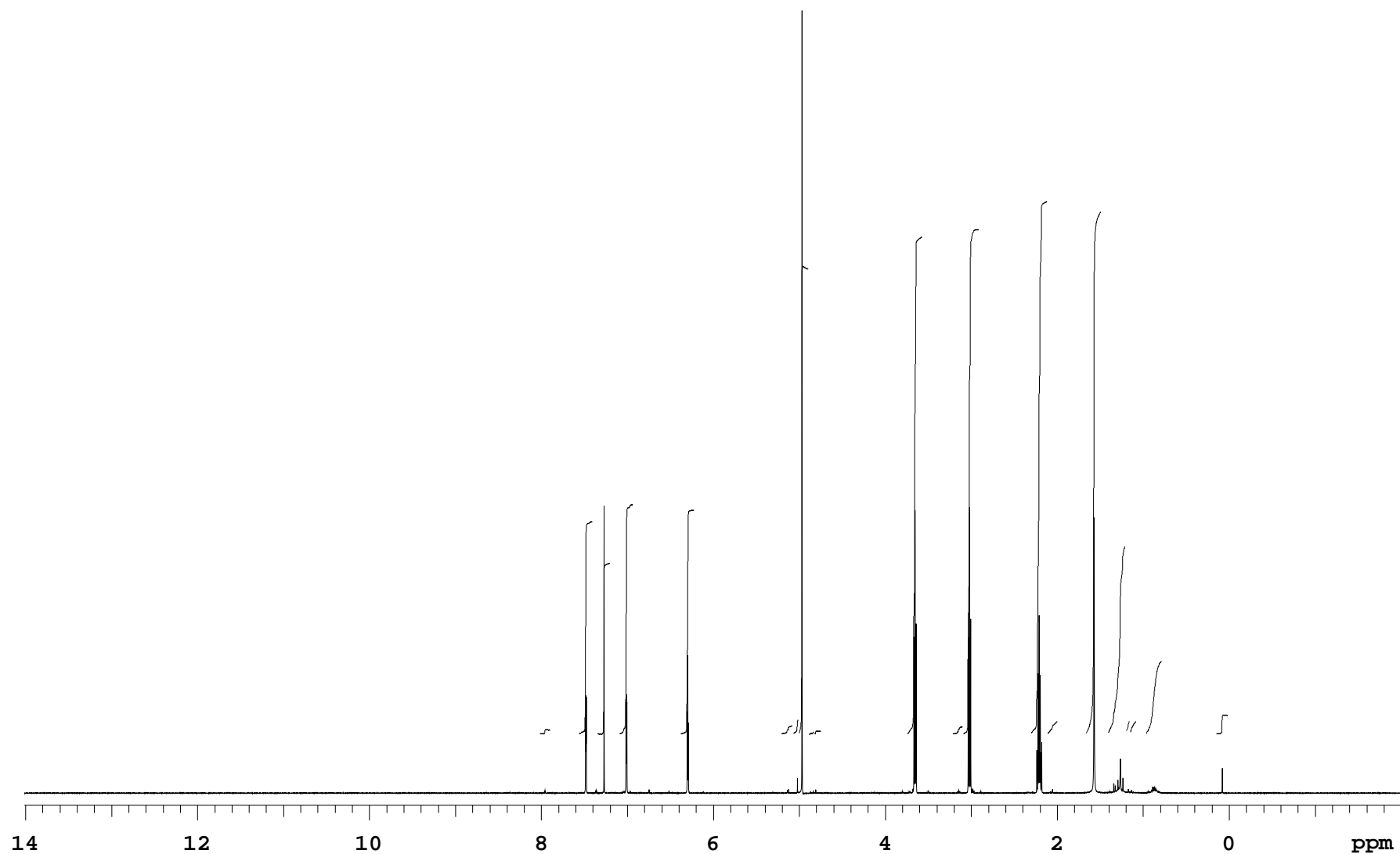
JH431-2d\_data\_new

Sample Name JH431-2d\_data\_new  
Date collected 2022-10-03

Pulse sequence PROTON  
Solvent cdcl3

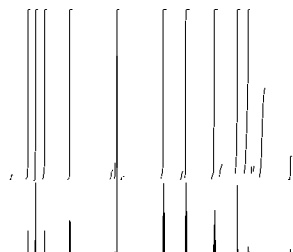
Temperature 25  
Spectrometer chpc-nmr500a-vnmrs500

Study owner jh2585  
Operator jh2585



## JH431-2d\_data\_new

Sample Name	JH431-2d_data_new	Pulse sequence	PROTON	Temperature	25	Study owner	jh2585
Date collected	2022-10-03	Solvent	cdcl3	Spectrometer	chpc-nmr500a-vnmrs500	Operator	jh2585



## INTEGRAL VALUES

Integral	start(ppm)	end	value
1	8.02517	7.89411	0.101
2	7.56254	7.40507	5.706
3	7.3503	7.19772	4.589
4	7.09111	6.93266	6.170
5	6.38005	6.21866	6.023
6	5.2044	5.07529	0.224
7	5.07529	5.00683	0.394
8	5.00585	4.89239	12.511
9	4.89239	4.82784	0.048
10	4.82784	4.74764	0.072
11	3.74608	3.56612	13.375
12	3.21108	3.09371	0.197
13	3.09273	2.90689	13.584
14	2.31124	2.11563	14.333
15	2.11465	1.99239	0.343
16	1.66571	1.48379	14.088
17	1.41043	1.20406	5.089
18	1.20406	1.15516	0.356
19	1.15516	1.07593	0.351
20	0.968343	0.779574	1.955
21	0.149692	0.0127616	0.491

## SAMPLE

date Oct 3 2022  
solvent cdcl3  
file /home/bath/vnmrsys  
/data/jh2585/JH431-2d\_da  
ta\_new\_20221003\_01/PROTO  
N\_02.fid

## PRESATURATION

satmode n  
wet n

## SPECIAL

temp 25.0  
gain 48  
spin 0  
hst 0.008  
pw90 7.900  
alfa 10.000

## ACQUISITION

sw 8012.8  
at 2.045  
np 32768  
fb 4000  
bs 32  
d1 1.000  
nt 8  
ct 8

## FLAGS

il n  
in n  
dp y  
hs nn

## TRANSMITTER

tn H1  
sfrq 500.059  
tof 500.1  
tpwr 61  
pw 3.950

## PROCESSING

fn not used

## DISPLAY

sp -1005.6  
wp 8012.3  
rfi 1006.0  
rfp 0  
rp 16.2  
lp 0

## DECOUPLER

dn C13  
dof 0  
dm nnn  
decwave W40\_OneNMR  
dpwr 39  
dmf 32258

## PLOT

wc 234  
sc 8  
vs 37  
th 44  
ai cdc ph

Plotname: PROTON\_02\_plot01

Data file /home/bath/vnmrsys/data/jh2585/JH431-2d\_data\_new\_20221003\_01/PROTON\_02.fid

Plot date 2022-10-03